



Wireless Airspace Defenses: The LOCH Technologies Advantage

Overview

LOCH Technologies specializes in wireless airspace defense, offering cutting-edge solutions designed to protect against a wide array of wireless threats, including cellular, CBRS, Wi-Fi, IoT, Bluetooth, and GPS attacks. Their unique approach and comprehensive technology make them a leader in the field of wireless security by leveraging AI-driven software-defined radio.

Key Benefits

01

Comprehensive Coverage:

Multi-Protocol Defense: LOCH Technologies provides robust protection across multiple wireless protocols, ensuring security for cellular, CBRS, Wi-Fi, IoT, Bluetooth, and GPS networks from a single pane of glass. This comprehensive coverage is essential in today's interconnected environment, where vulnerabilities in one protocol can compromise overall security.

Real-Time Monitoring: Continuous, real-time monitoring of the wireless airspace allows for immediate detection and response to potential threats, minimizing the window of vulnerability.

02

Advanced Threat Detection:

AI-Powered Analytics: Utilizing artificial intelligence and machine learning, LOCH Technologies' solutions can detect anomalous behavior and potential threats with high precision, reducing false positives and improving overall security posture from 300 Mhz to 6 Ghz.

Deep Packet Inspection: Advanced packet analysis enables the identification of sophisticated frequency and protocol attack patterns and unauthorized transmissions, providing a deeper layer of security.

03

Scalability and Flexibility:

Modular Architecture: The modular design of LOCH's AirShield™ solutions allows for easy scalability, accommodating the growth of wireless networks without compromising security.

Customizable Solutions: Tailored security configurations ensure that unique organizational requirements and specific threat landscapes are effectively addressed across the most commonly used IoT, IIoT, Cellular/CBRS, and GPS frequencies and protocols.

04

Enhanced Situational Awareness:

Visualized Airspace: Comprehensive RF visualization provides a clear, real-time view of the wireless environment, helping security teams to quickly understand and respond to threats.

Integrated Alerts: Seamless integration with existing security information and event management (SIEM) systems ensures timely alerts and efficient incident management.

05

Proactive Defense Posture:

Preemptive Measures: LOCH Technologies AirShield enables organizations to adopt a proactive defense stance by identifying and mitigating potential threats before they can exploit vulnerabilities.

Zero Trust Architecture: Implementing a zero trust security model ensures that every device and transmission that is 'intentional' or 'non-intentional' is continuously validated, significantly enhancing overall security.

Unique Key Features

Unified Platform for Diverse Threats:

01

LOCH Technologies stands out by providing a single platform that addresses a wide spectrum of wireless threats, eliminating the need for multiple disparate solutions and simplifying security management.

Industry-Leading Expertise:

02

Leveraging years of specialized experience in wireless security, LOCH Technologies brings unparalleled expertise and innovation, ensuring that the AirShield solution is both cutting-edge and reliable. AirShield has twenty-nine (29) global patents.

Collaborative Ecosystem:

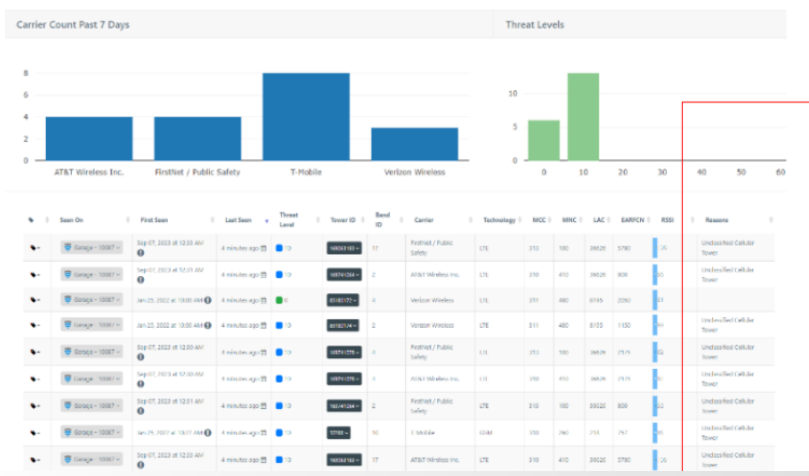
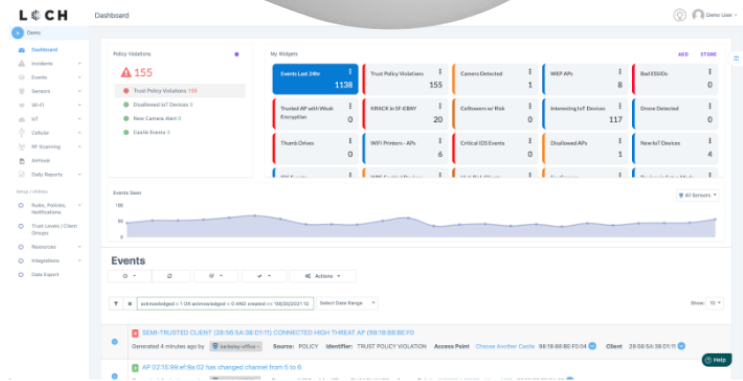
03

Strategic partnerships with leading technology providers enhance the capabilities of LOCH Technologies' solutions, ensuring they are always at the forefront of wireless security advancements.

Proven Track Record:

04

With a history of successful deployments across various industries, including governments worldwide, the US Department of Defense, Healthcare, and critical infrastructures such as Airports and Seaports, LOCH Technologies have demonstrated the efficacy and reliability of their solutions in real-world scenarios.



Conclusion

LOCH Technologies' wireless airspace defenses offer a unique and comprehensive approach to protecting against the diverse and evolving threats in the wireless landscape. A combination of advanced technology, expert knowledge, and a unified platform makes them an invaluable partner in securing the modern wireless environment.